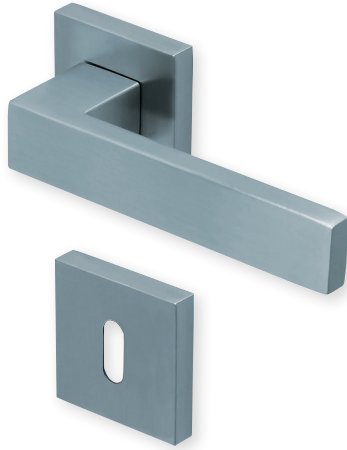
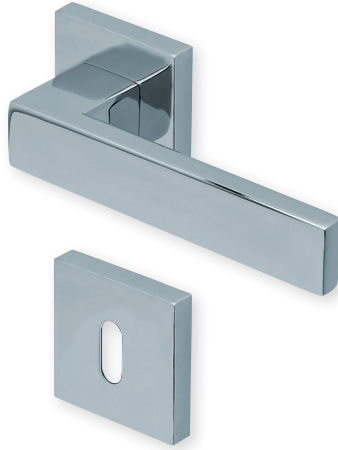


Form 1005 auf Quadratrosette

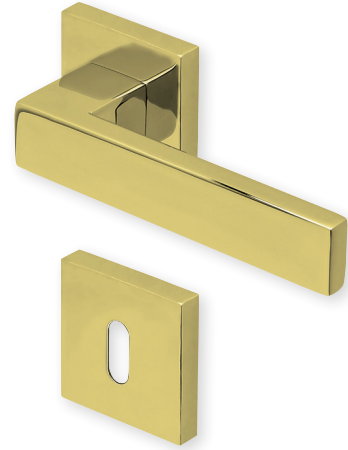
Slidebloc® 3.0 Gleitlagertechnik



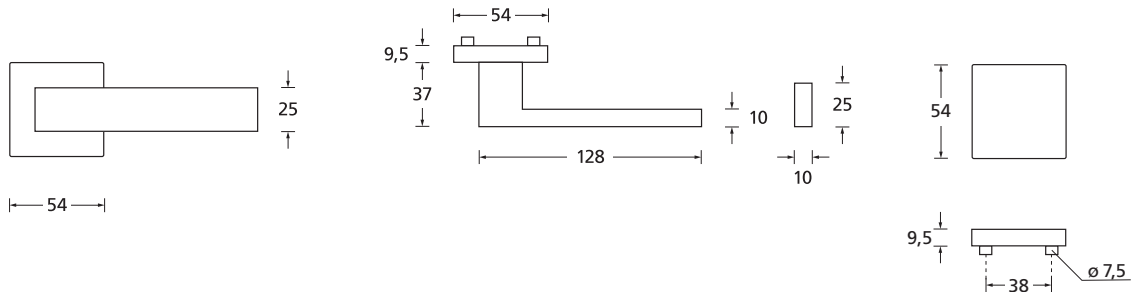
Drücker Edelstahl matt
Rosette Edelstahl matt



Drücker Edelstahl poliert
Rosette Edelstahl poliert



Drücker PVD Messinggelb
Rosette PVD Messinggelb








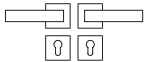
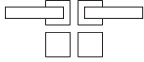
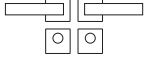



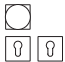
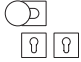
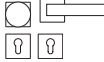


Details:

Material:	Edelstahl 304 nach AISI-Norm	Standard Türstärke:	38 - 42 mm
Oberflächen:	Edelstahl matt Edelstahl poliert PVD Messinggelb	Verschraubung:	selbstschneidende Durchzugsschrauben, ab 42 mm Türstärke: Gewindehülsen und M4 Schrauben
Technik:	Slidebloc® 3.0 Gleitlagertechnik, wartungsfreie Gleitlager aus geschmiertem Polyamid, beidseitig 2 Federstahl-Druckfedern, 10 Jahre Funktionsgarantie	Vierkantmaß:	8 mm Vierkantstift (8,5 mm Distanzhülse)
		Gebrauchskategorie:	3 - DIN EN 1906 Klassifizierung 3 7 - 0 0 4 0 B

Form 1005 auf Quadratrosette

Slidebloc® 3.0 Gleitlagertechnik



				
		Edelstahl matt	Edelstahl poliert	PVD Messinggelb
	OS - Garnitur (ohne Schlüsselrosette)	SB3.0-Q10050S	SB3.0-QP10050S	SB3.0-QPVM10050S
	BB - Garnitur	SB3.0-Q10050	SB3.0-QP10050	SB3.0-QPVM10050
	PZ - Garnitur	SB3.0-Q10052	SB3.0-QP10052	SB3.0-QPVM10052
	Blind - Garnitur	SB3.0-Q10051	SB3.0-QP10051	SB3.0-QPVM10051
	RZ - Garnitur	SB3.0-Q10058	SB3.0-QP10058	SB3.0-QPVM10058
	WC - Garnitur	SB3.0-Q10053	SB3.0-QP10053	SB3.0-QPVM10053
	WC - Garnitur rot/weiß Anz.	SB3.0-Q100531	SB3.0-QP100531	SB3.0-QPVM100531
	WC - Garnitur rot/grün Anz.	SB3.0-Q100532	SB3.0-QP100532	SB3.0-QPVM100532
Wechsel-Garnitur				
	PZ-WG - Knopf ger. DIN R/L	SB3.0-Q10055/6	SB3.0-QP10055/6	SB3.0-QPVM10055/6
	PZ-WG - Knopf gekr. DIN R/L	SB3.0-Q100551/61	SB3.0-QP100551/61	SB3.0-QPVM100551/61
	PZ-WG - Zyl. Knopf ger. DIN R/L	SB3.0-Q100552/62	SB3.0-QP100552/62	SB3.0-QPVM100552/62
	PZ-WG - Zyl. Knopf versetzt DIN R/L	SB3.0-Q100553/63	SB3.0-QP100553/63	SB3.0-QPVM100553/63
Drückerpaar				
	ohne Rosetten	D10050	DP10050	DPVM10050

Technik:

Slidebloc® 3.0 Gleitlagertechnik

Direkt in die Basis eingepresste, wartungsfreie Gleitlager aus geschmiertem Polyamid, 4 starke vorgespannte Druckfedern, Stütznocken, Basis aus glasfaserverstärktem Polyamid und selbstschneidende Durchzugsschrauben (ab 42 mm Türstärke: Gewindehülsen und M4 Schrauben).

