

Lust
auf
imi?

imi
SURFACE DESIGN

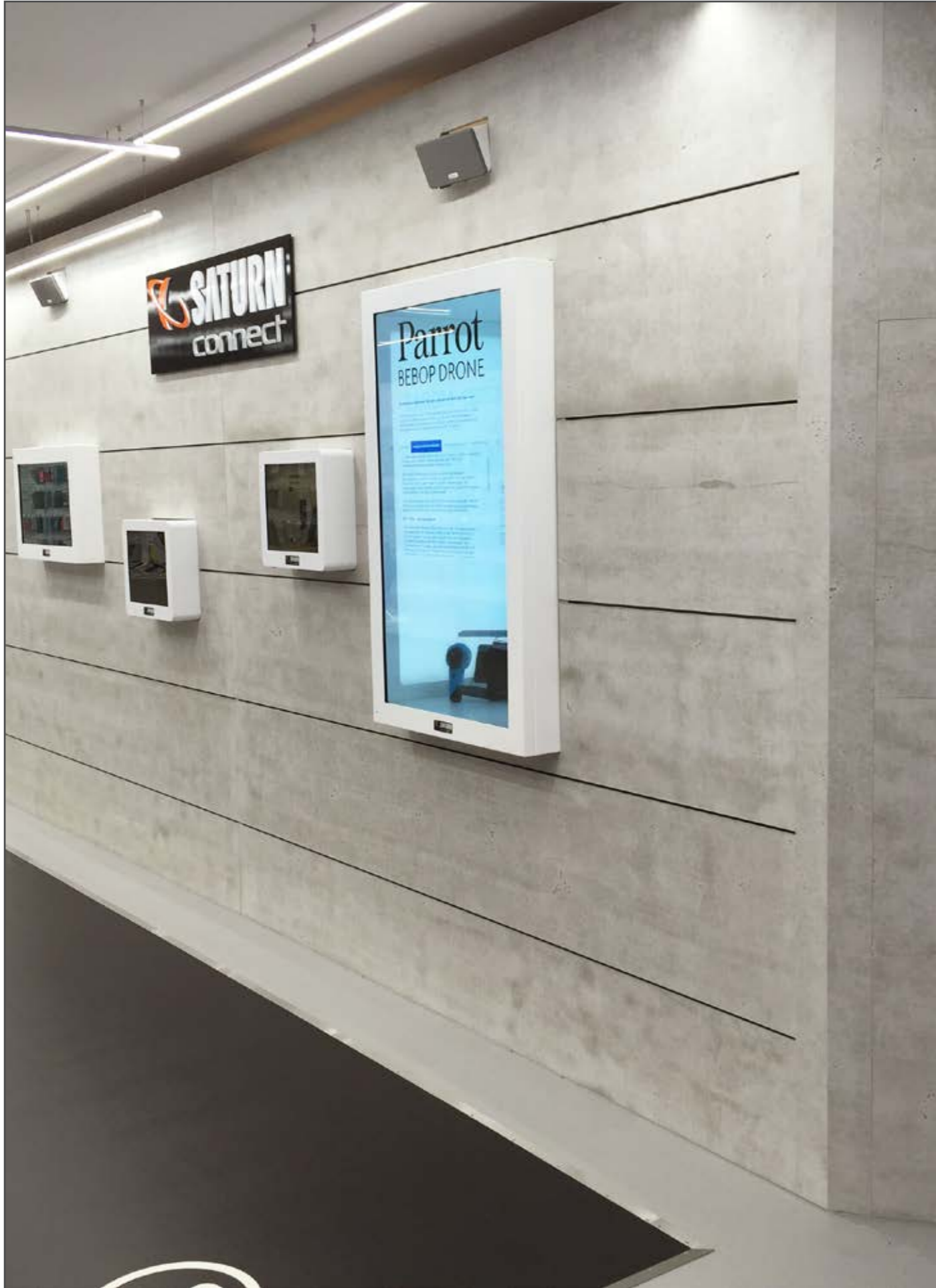




imi-beton vintage

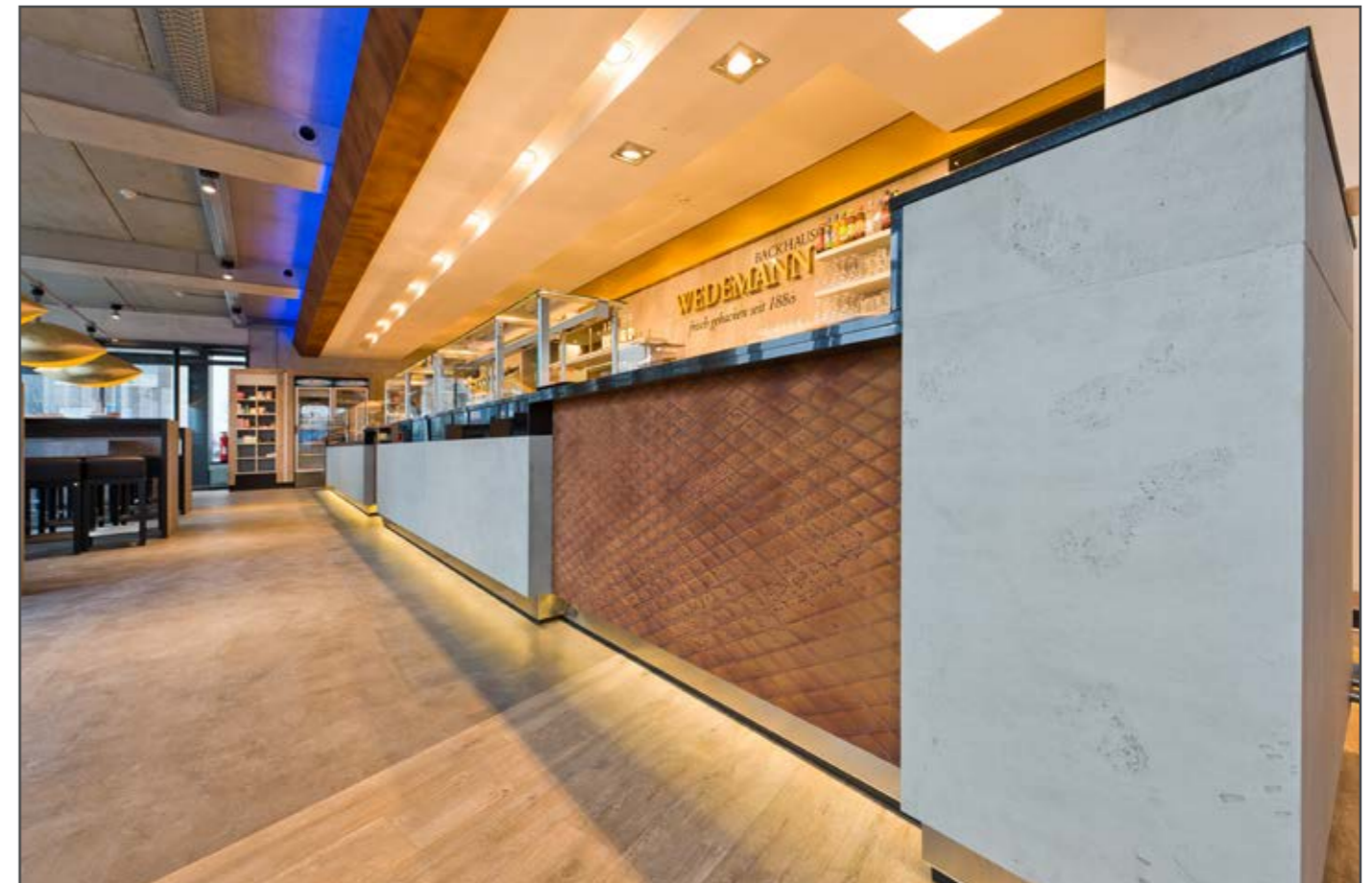
Hafenterminal der Reederei Frisia auf Norderney



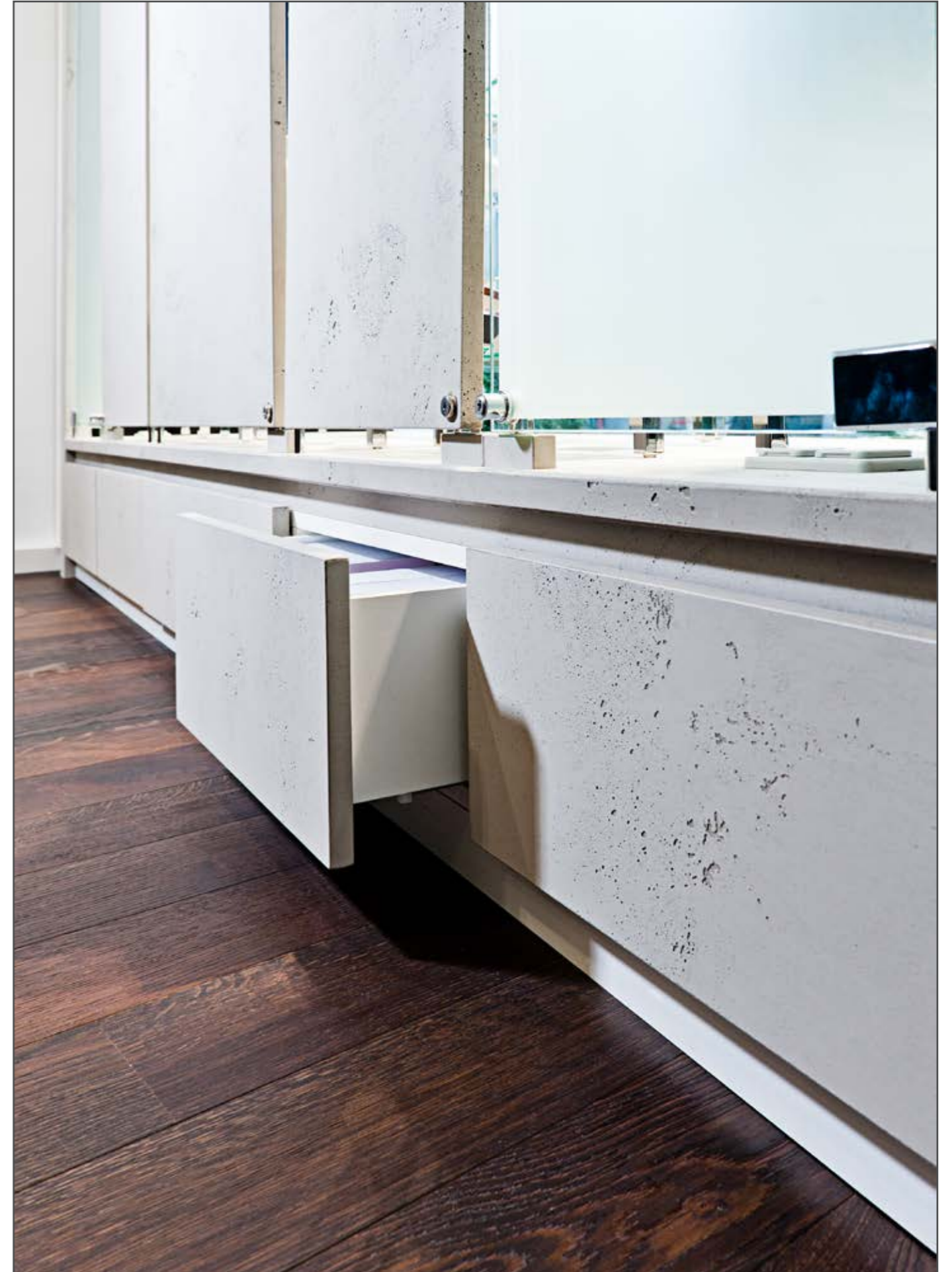




Show-Küche – Ausstellung in Shenzhen, China









Ladenlokal Beckmann-Schmuck in Rheine



FALKE
ERGONOMIC
SPORT SYSTEM

FALKE
ERGONOMIC
SPORT SYSTEM

ACHILLES

STABILIZING

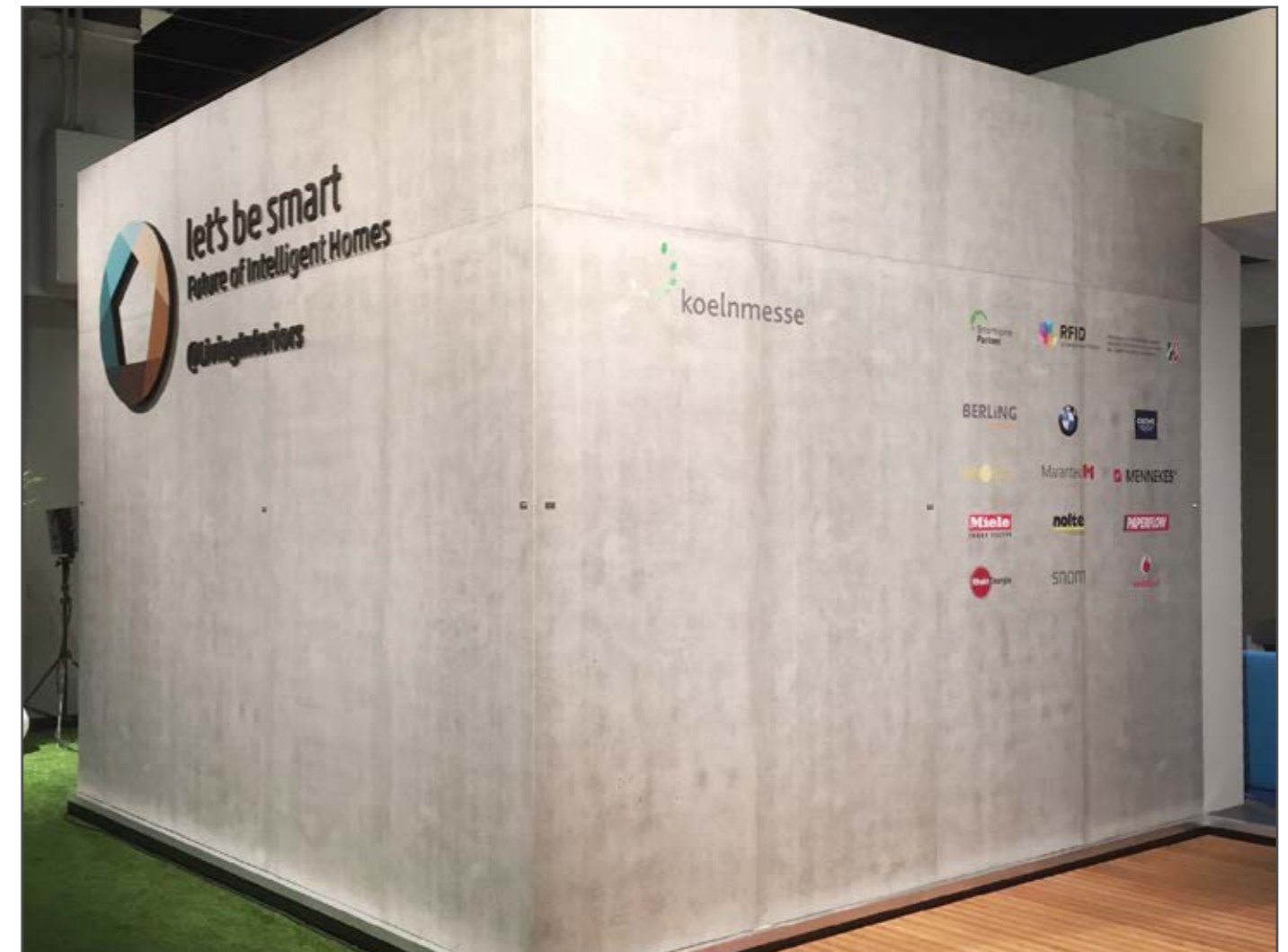
IMPULSE

IMPULSE AIR

4 GRIP

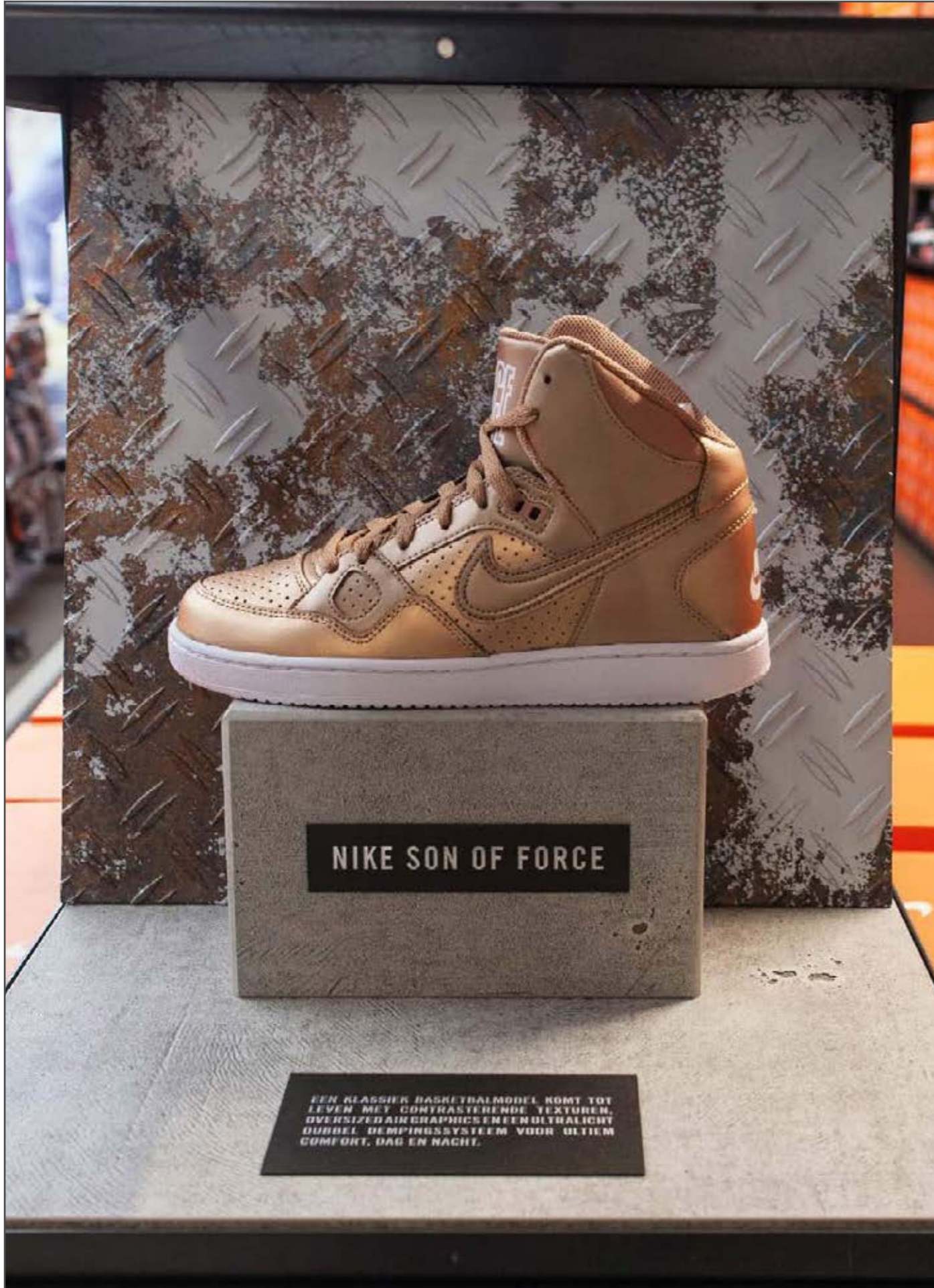
IMPULSE
RUN





imi-beton vintage

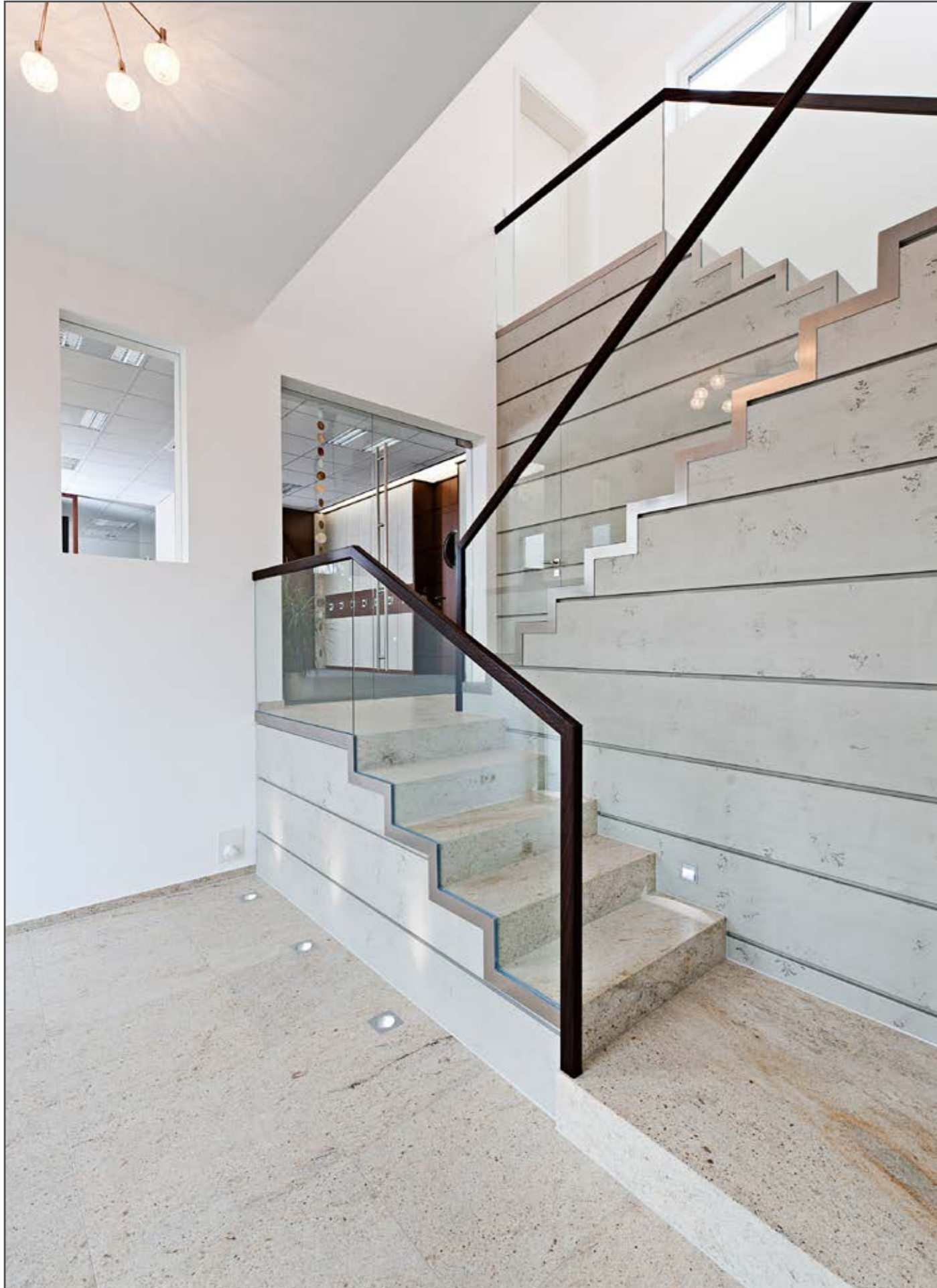






















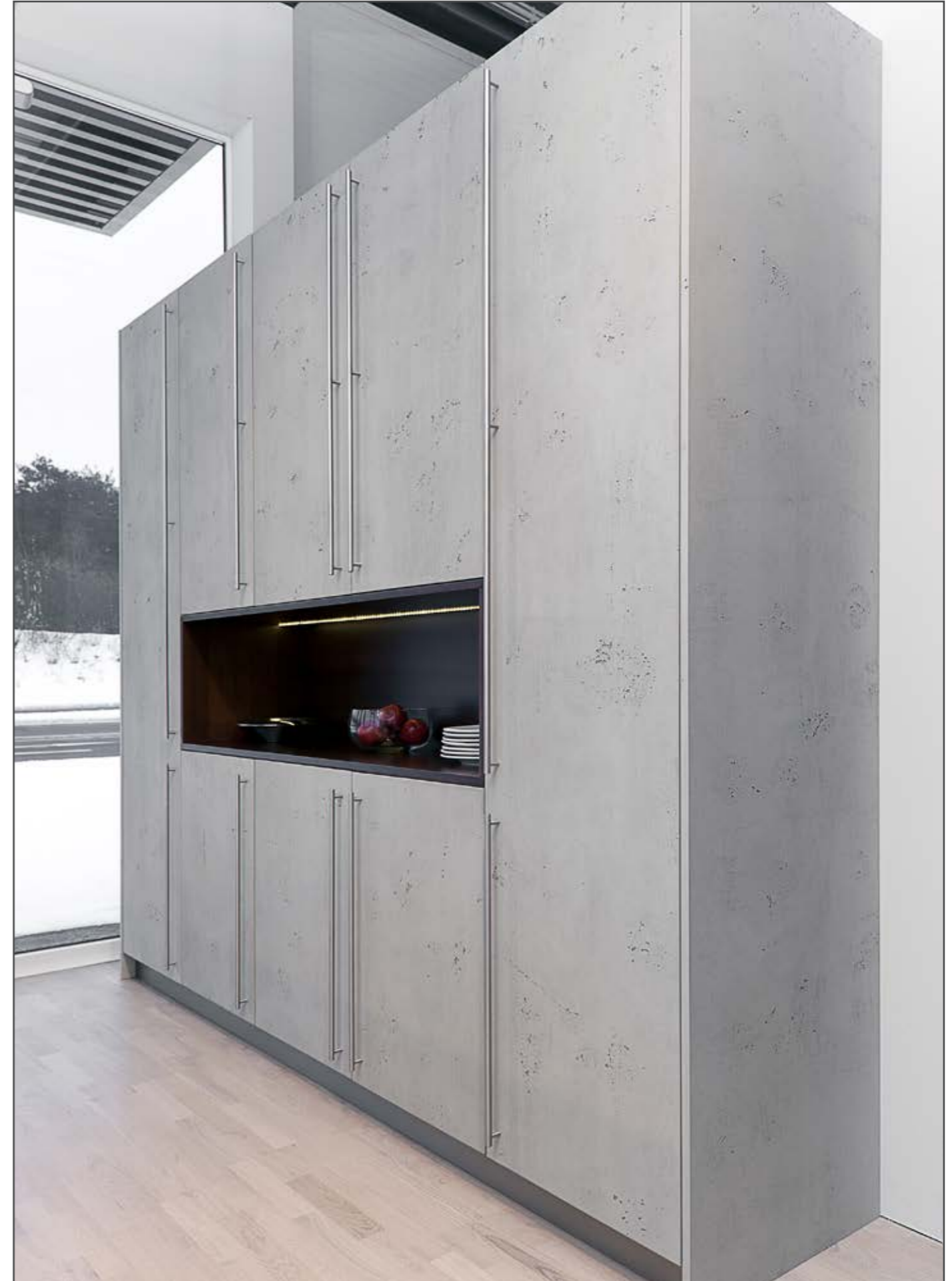




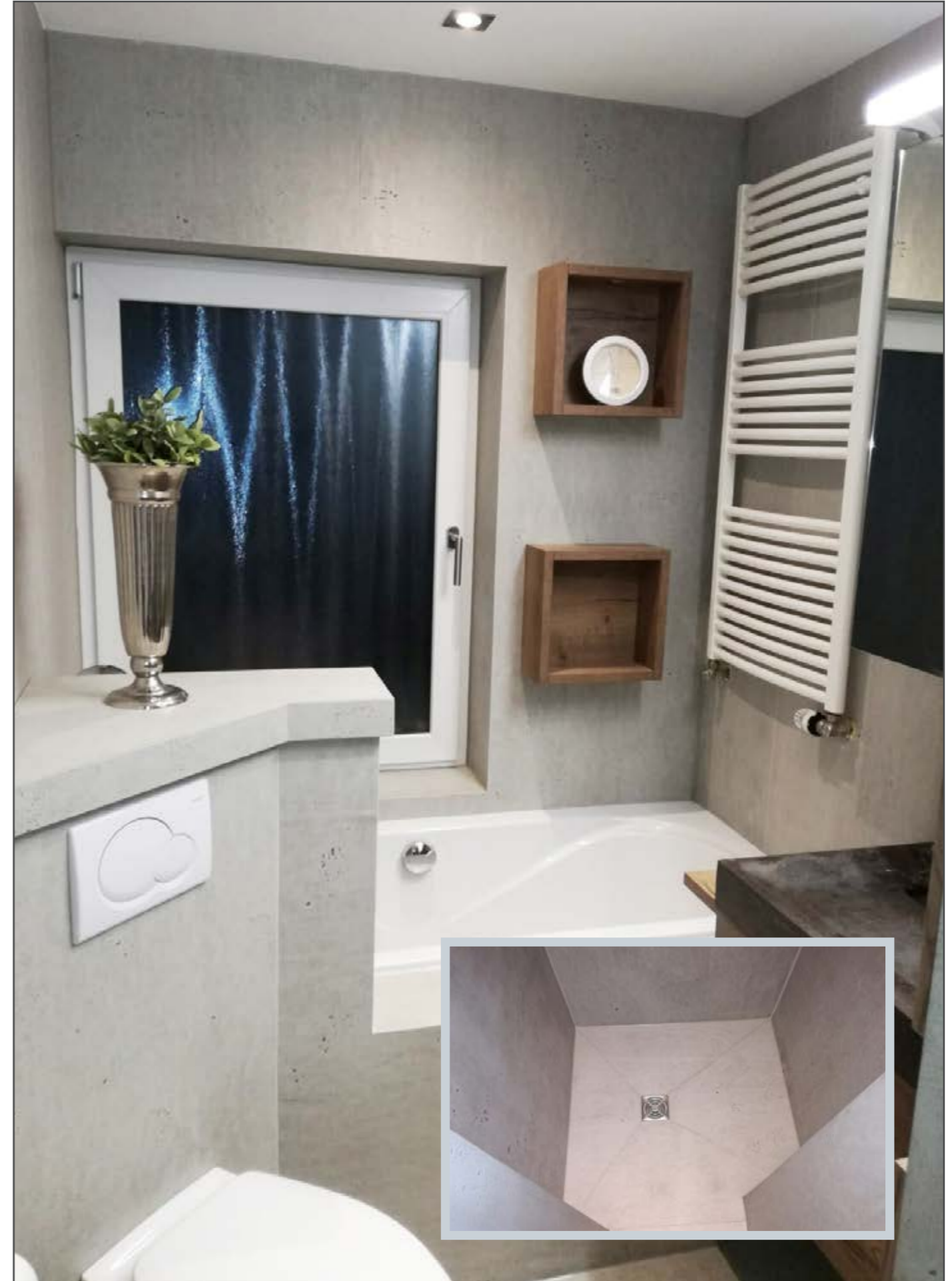


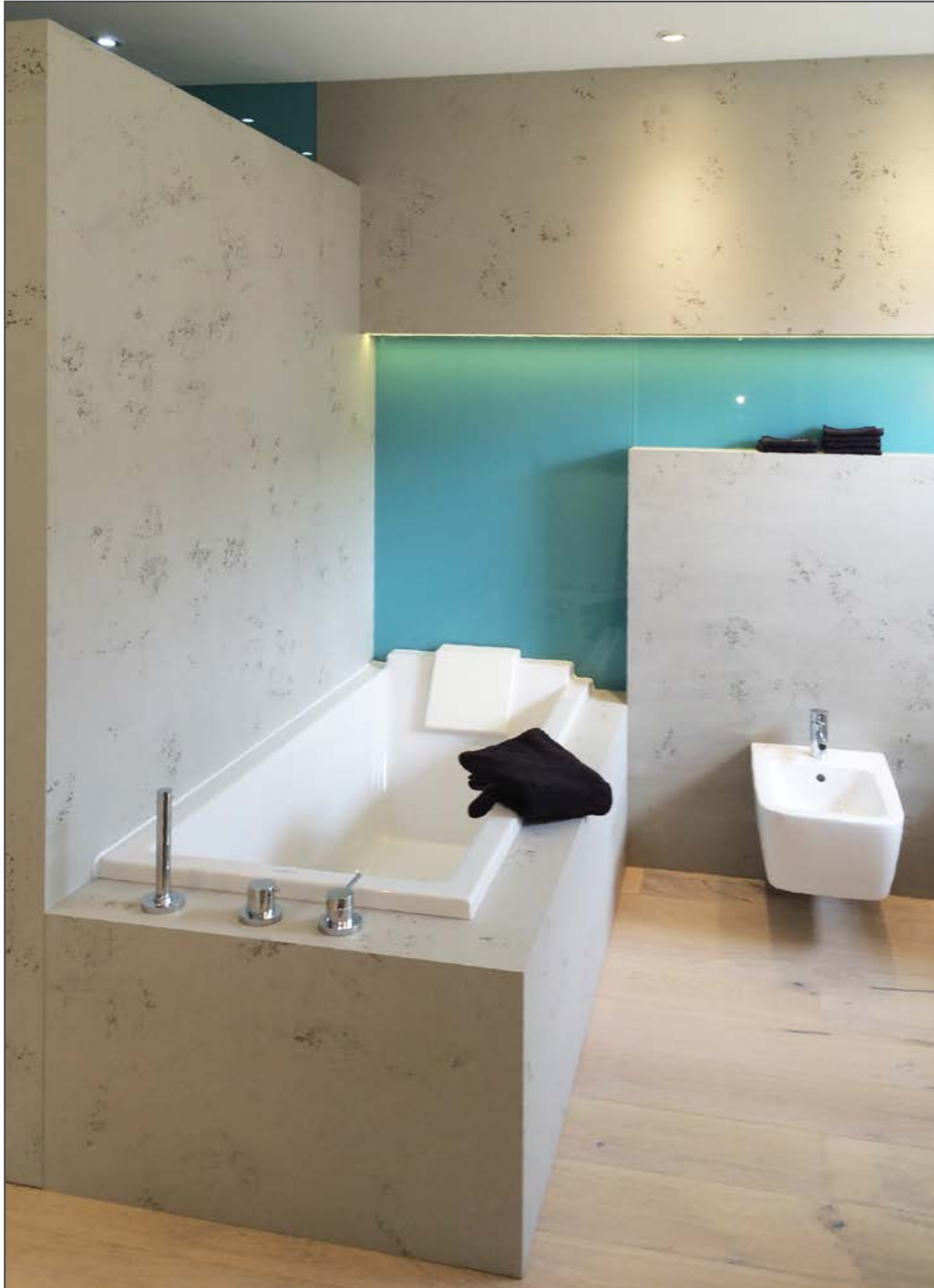












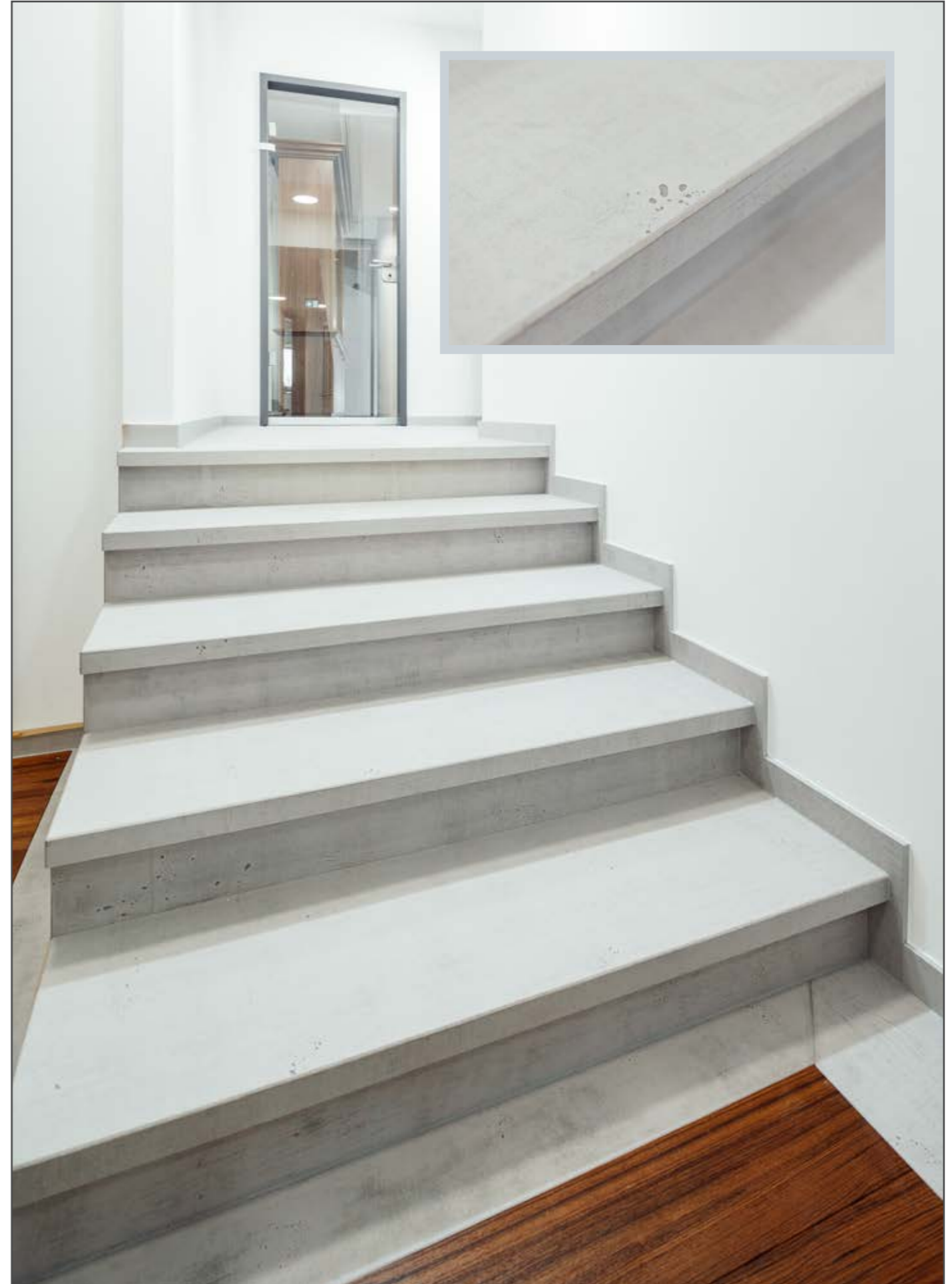
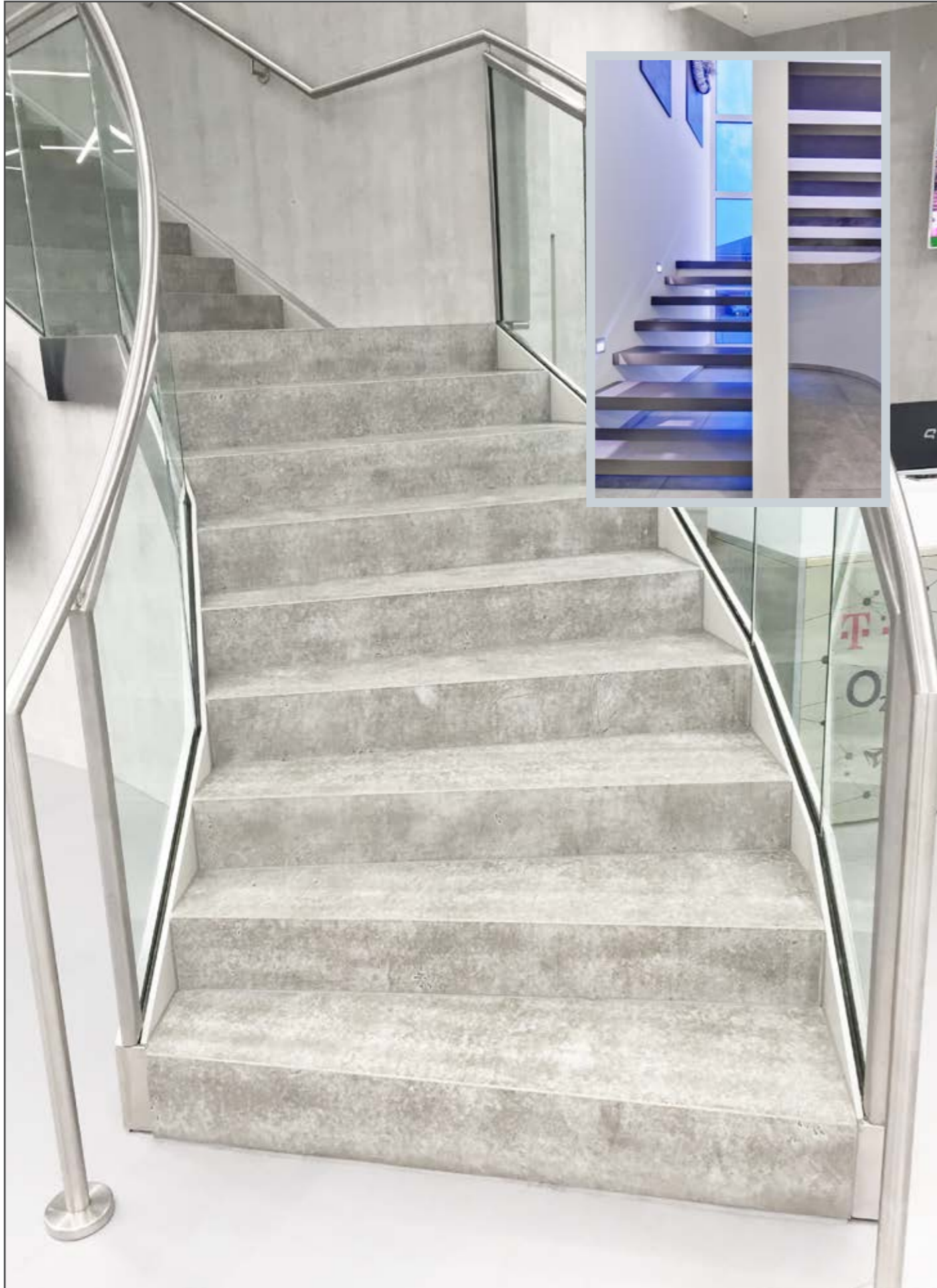
S T S Stefan Schmitz GmbH & Co. KG

















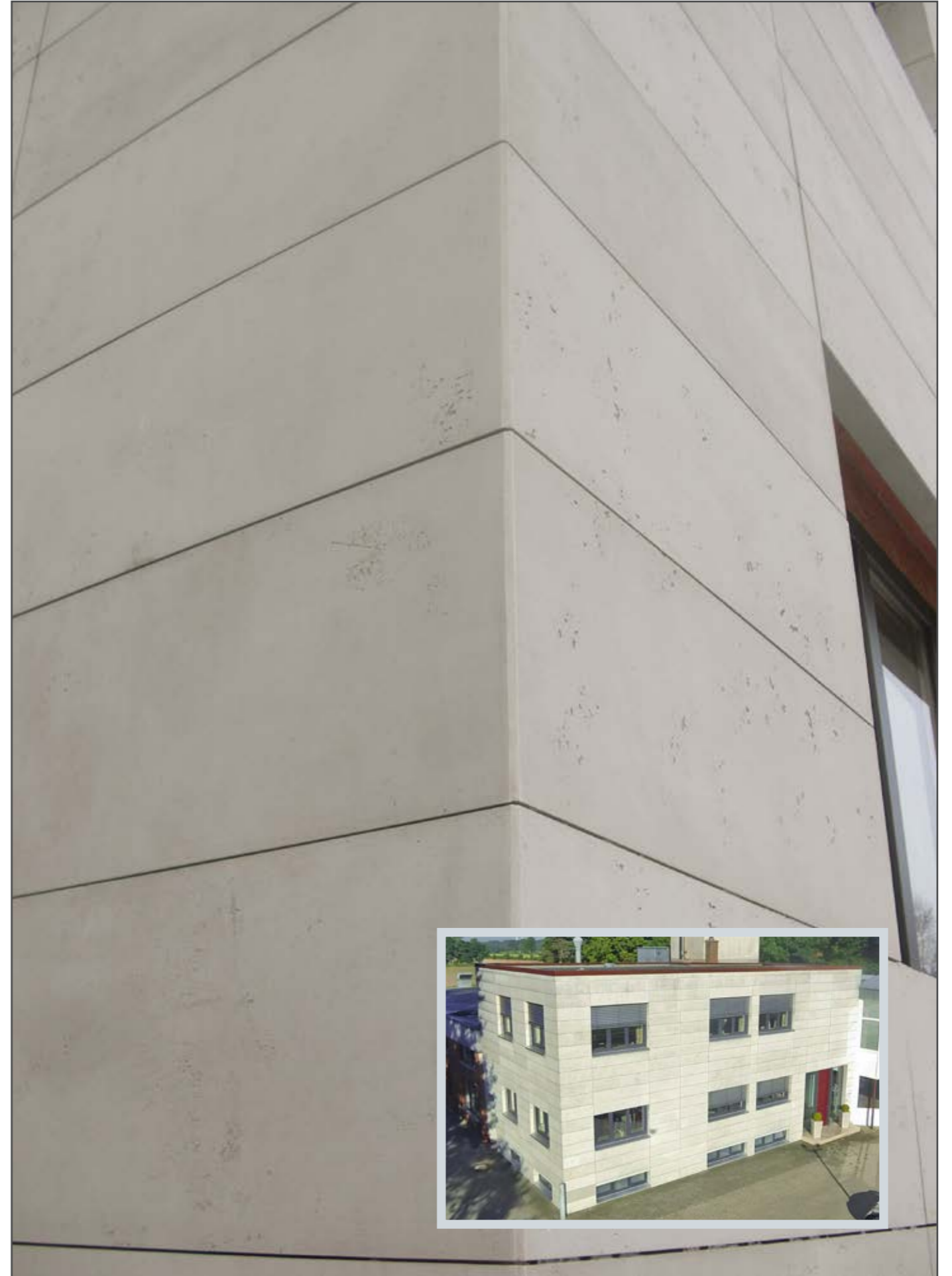
26



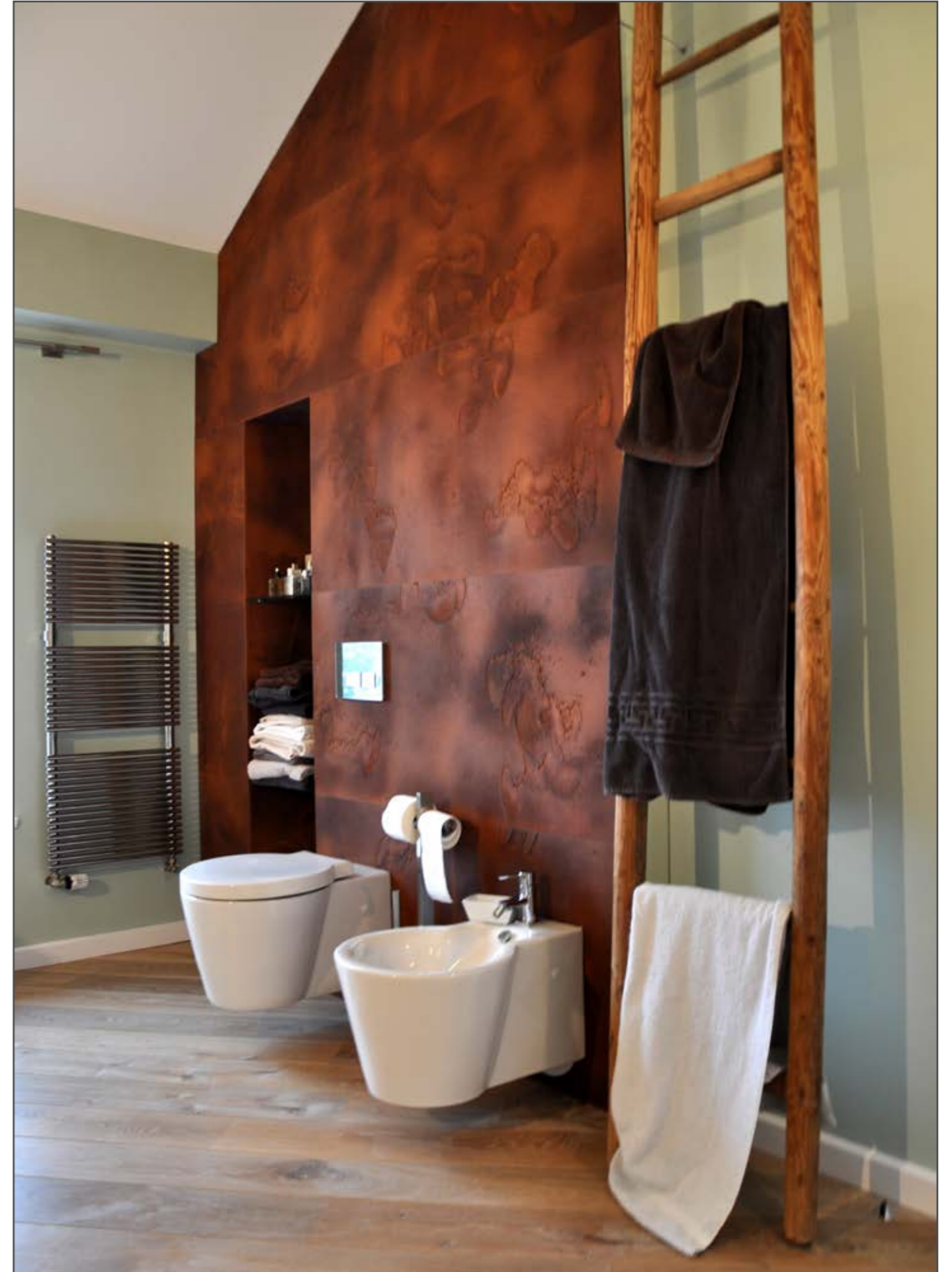




Diese Abbildung zeigt eine Computer-Visualisierung







imi-rost tief | Badeinrichtung







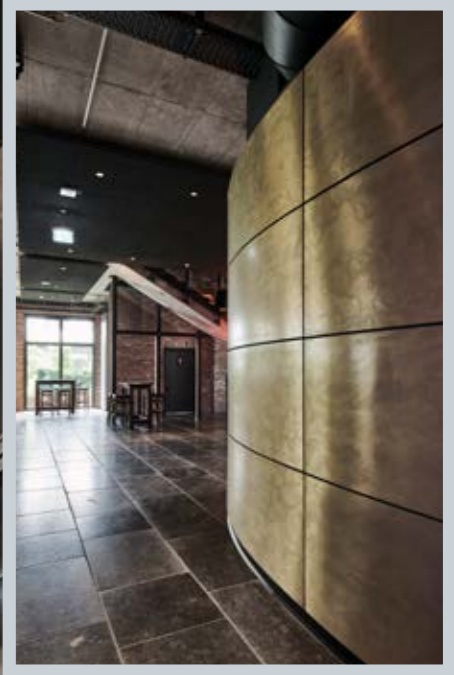


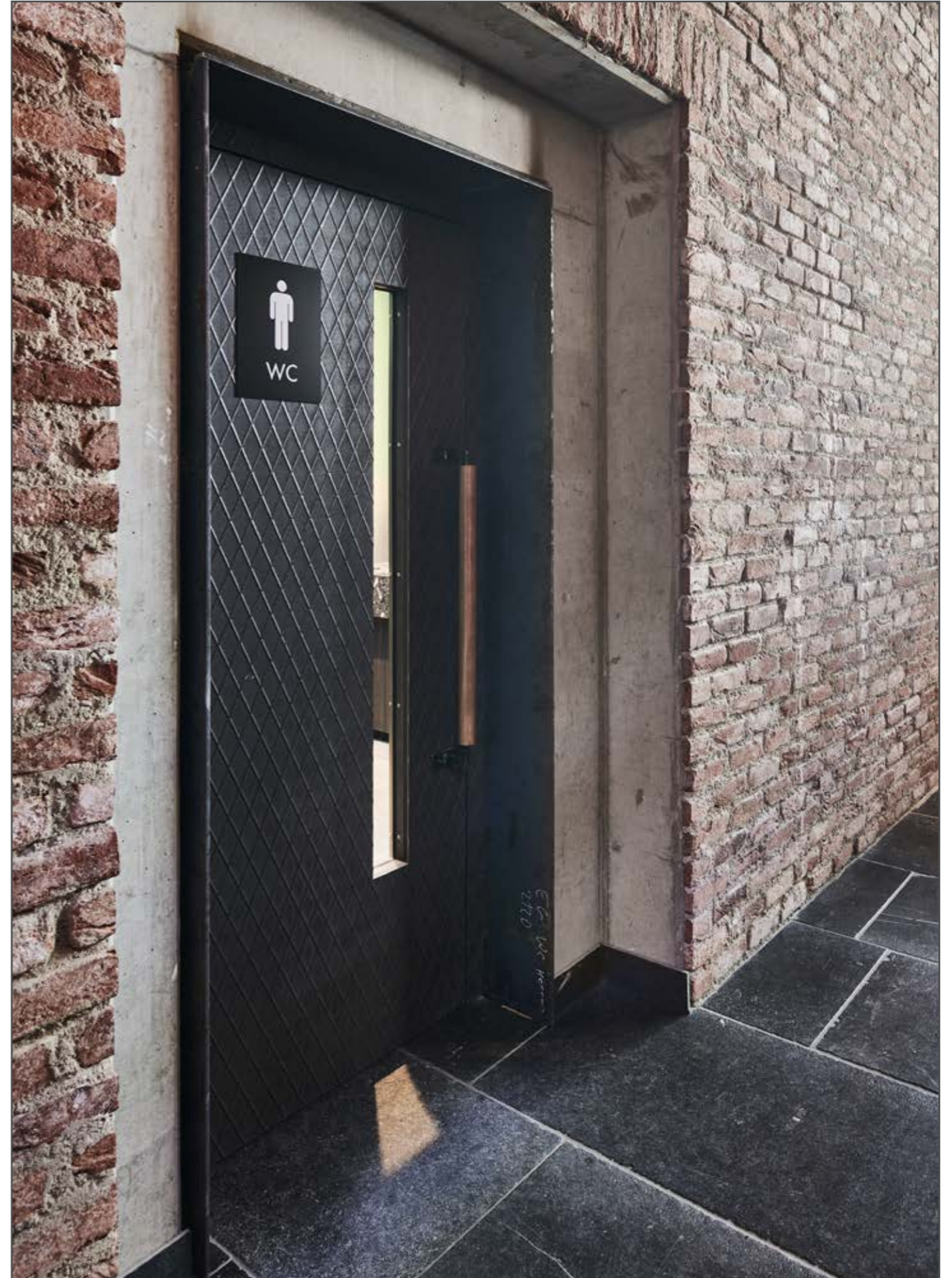


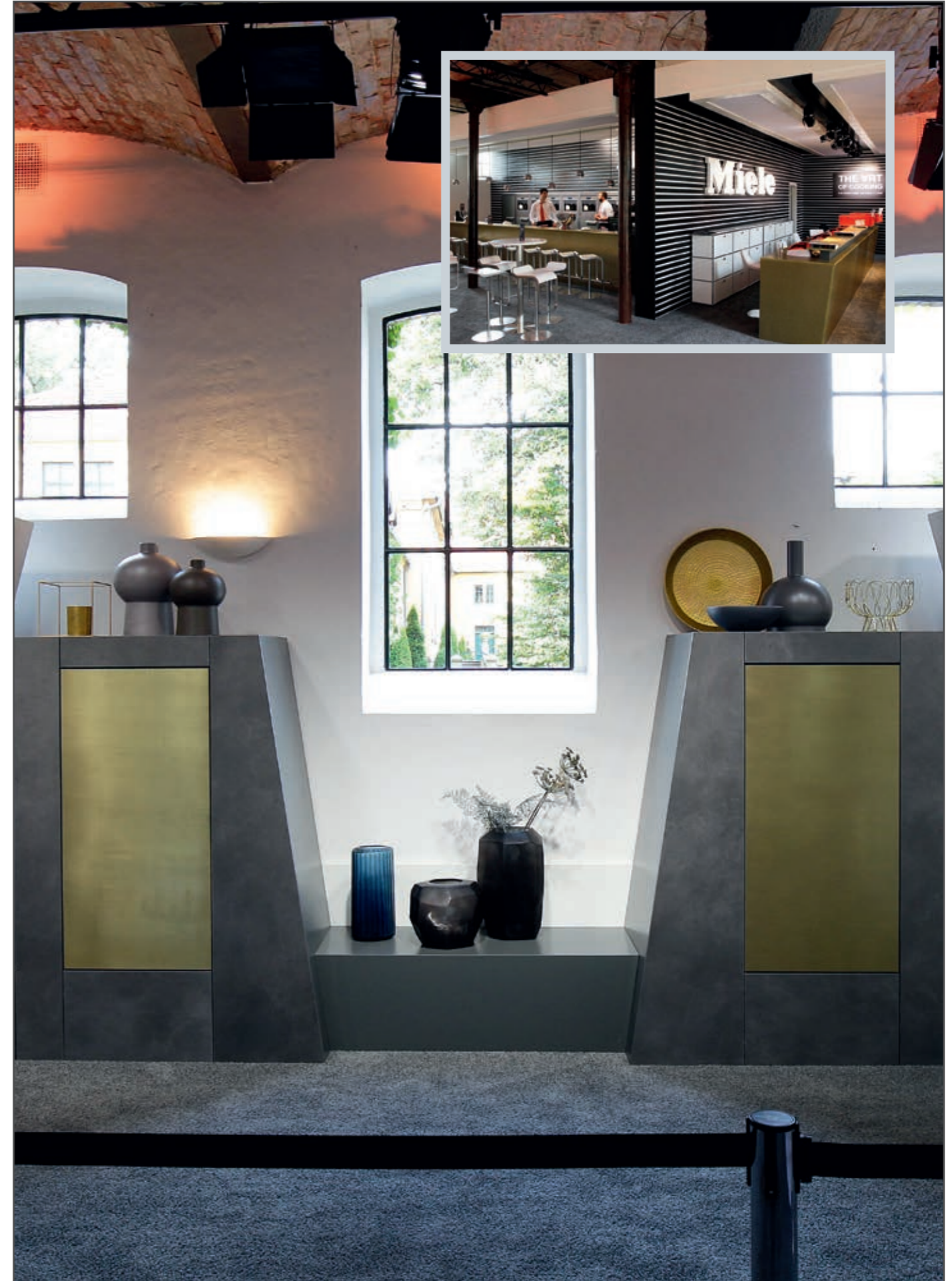
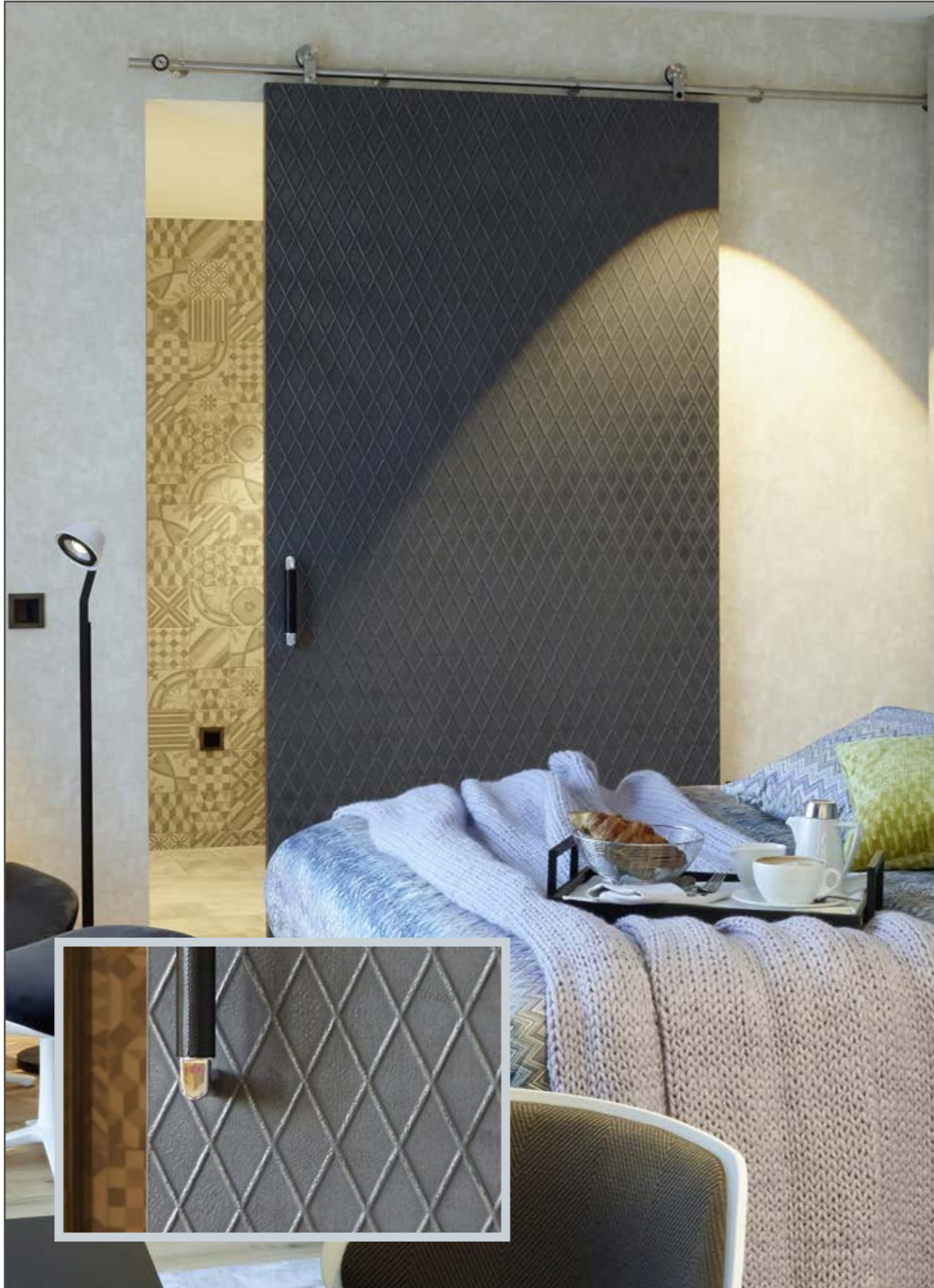




Bilder: ©Dittel Architekten GmbH



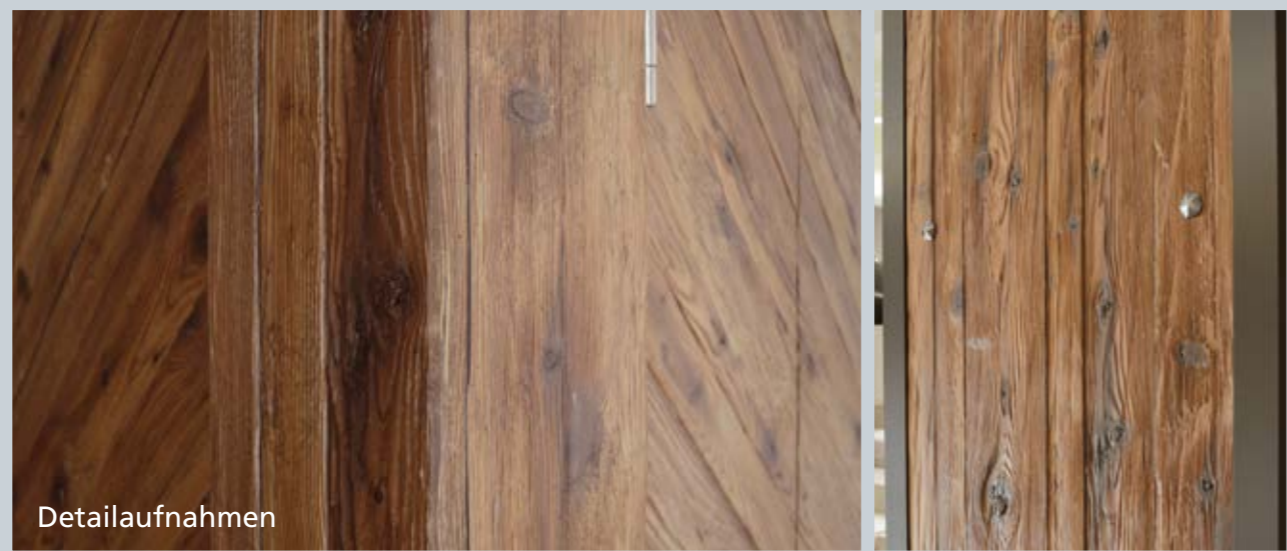




imi-altholz sonnig rustikal | private Jagdhütte



imi-altholz dunkel-gehackt | Marstallcenter Ludwigsburg

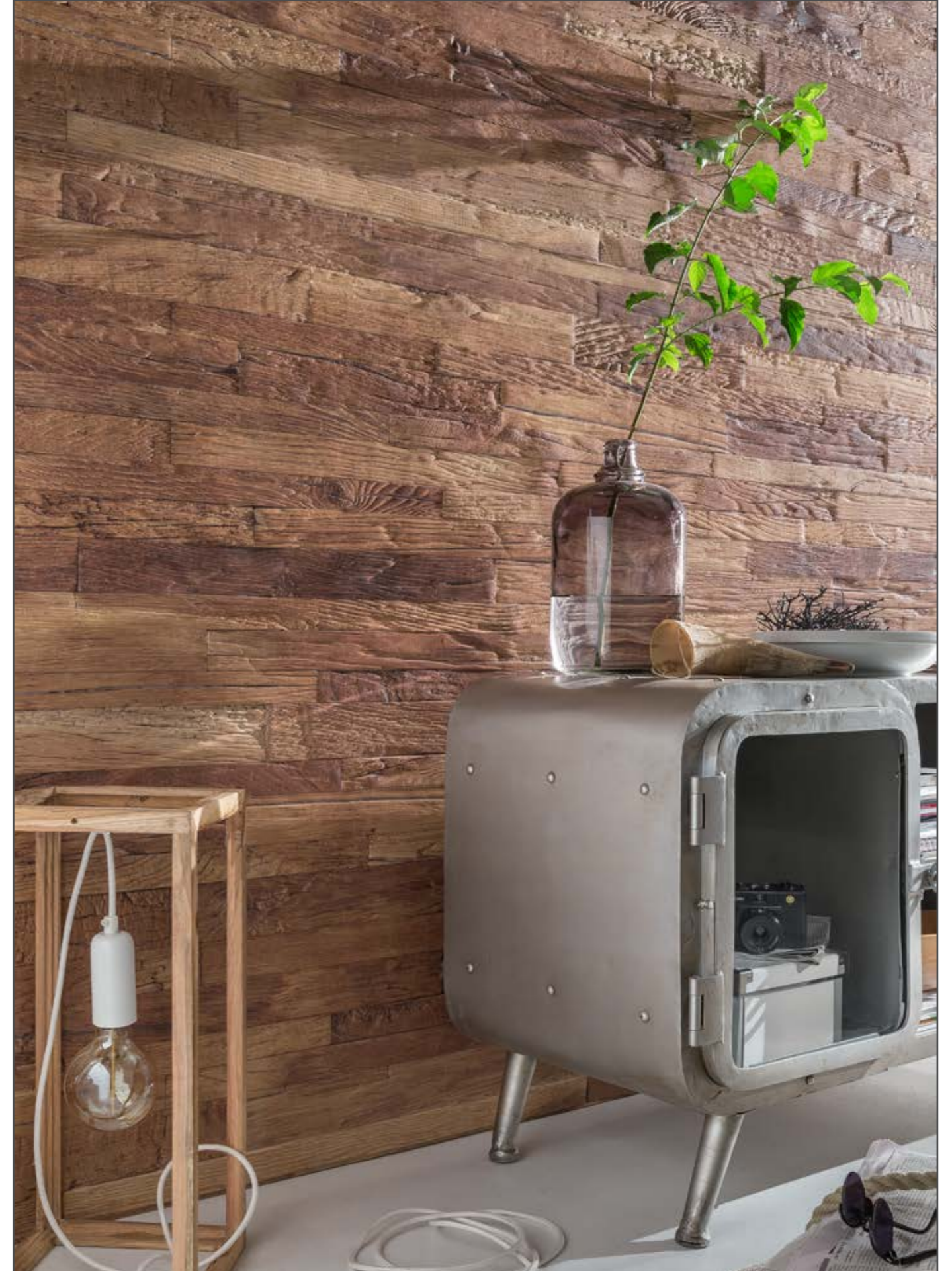


Detailaufnahmen

Fotos: DDS, Konradin Medien GmbH, Georg Molinski







imi-monyt Steinpaneel



Wirtshaus in Obernburg





Swissbau Design Award 2014,
Bronze in der Kategorie Standbauten über 80 m2.

Walter Meier Klima Schweiz AG
Fotograf Stefan Schmidlin



www.**imi**-beton.com

imi ist eine Marke der

H. Schubert GmbH

Bilk 73

48493 Wettringen

Tel.: +49 (0) 25 57 - 93 77 40

Fax: +49 (0) 25 57 - 93 77 49

info@imi-beton.com

www.imi-beton.com